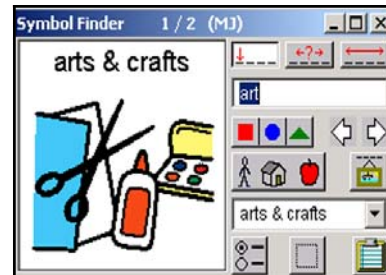


Boardmaker—Wisconsin Special Pricing!

The Wisconsin Assistive Technology Initiative and LAB Resources are offering a special purchase on the software program, **Boardmaker**, to schools in Wisconsin. This special pricing will be in effect from October 1, 2006 through May 30, 2007.

Boardmaker, from Mayer-Johnson Co., is a graphics database containing over 3000 Picture Communication Symbols in bitmapped clip art form. You can use Boardmaker to quickly find and paste pictures into your display with a mouse click; print communication displays in black and white or color; or make worksheets, picture instruction sheets, reading books, journals, and posters. *Choose Mac or Windows version.*



We offer several options to help you learn how to use your software:

- **LAB Lessons** Hands-On tutorial for Boardmaker -Windows
 - Bound, printed tutorial or
 - PDF File—you are licensed to print up to 30 copies
- **Workshop in a Box:** Designed to provide you with the tools you need to conduct a workshop for up to 30 people. Workshop in a box CD contains these items: a PowerPoint presentation; LAB Lessons tutorial PDF (print up to 30 copies) agenda PDF, evaluation form PDF, completion certificate PDF, PowerPoint Viewer 2003, and Adobe reader. Also included: 1 paper copy of each PDF file, original TimeTimer and \$25 gift certificate. Windows only

Here is our special pricing:

	<u>Regular Price</u>	<u>State Buy Price</u>
BMW0607 Boardmaker – Windows	\$ 299.00	\$ 269.10
BMM0607 Boardmaker – Mac	\$ 299.00	\$ 269.10

Here is pricing on our training materials:

	<u>Price</u>
LAB Lessons Boardmaker for Windows printed, bound tutorial	\$ 17.95
LAB Lessons Boardmaker for Windows Tutorial CD (print up to 30 copies)	\$ 129.95
Workshop in a Box: Boardmaker for Windows	\$ 189.95

Please add 3% for shipping/handling. Our minimum shipping fee is \$10.

To participate in this special offer:

- Please send your purchase orders to LAB Resources.
- Please be sure to specify **Windows or Macintosh**.
- Other special offers do not apply. Questions? - please call LAB Resources.



Please send your Purchase Order to:

LAB Resources
 706 Kopmeier Drive
 Pewaukee, WI 53072

262-691-3476 local or 800-691-3476
Fax: 262-695-2504

www.elabresources.com
 Linda@elabresources.com